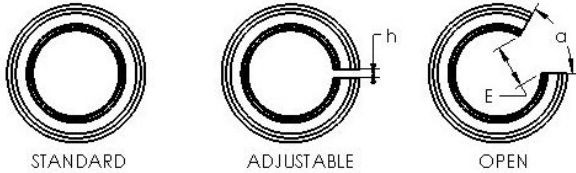
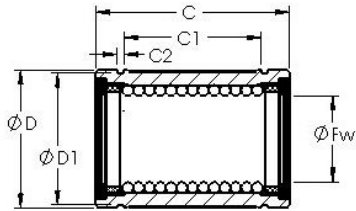




AST LBB 8 AJ linear bearings

Bearing No. LBB 8 AJ



Bore Diameter	12,7 mm
Bearing Type	adjustable clearance type
Dynamic Load Rating (Cr)	65
Static Load Rating (Cor)	183
Shaft Dia. (Fw)	0.500
Outside Dia. (D)	0.875
Length (C)	1.250
Groove-to-groove length (C1)	0.963
Groove Width (C2)	0.046
Groove Dia. (D1)	0.835
Adjustable Open Gap (h)	0.063
Weight (g)	31.50
Material	52100 chrome steel, or equivalent

LBB 8 AJ Bearing 2D drawings and 3D CAD models